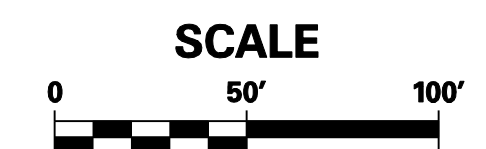
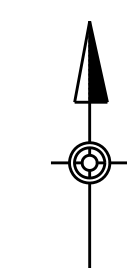


**WEST MAPLE AVE OVER NESHAMINY CREEK**  
BUCKS COUNTY, PENNSYLVANIA  
**PROJECT OVERVIEW**

**LEGEND:**

- PROPOSED BRIDGE REPLACEMENT
- PROPOSED ROADWORK AREA
- LEGAL RIGHT-OF-WAY
- PROPOSED WATER QUALITY SWALE

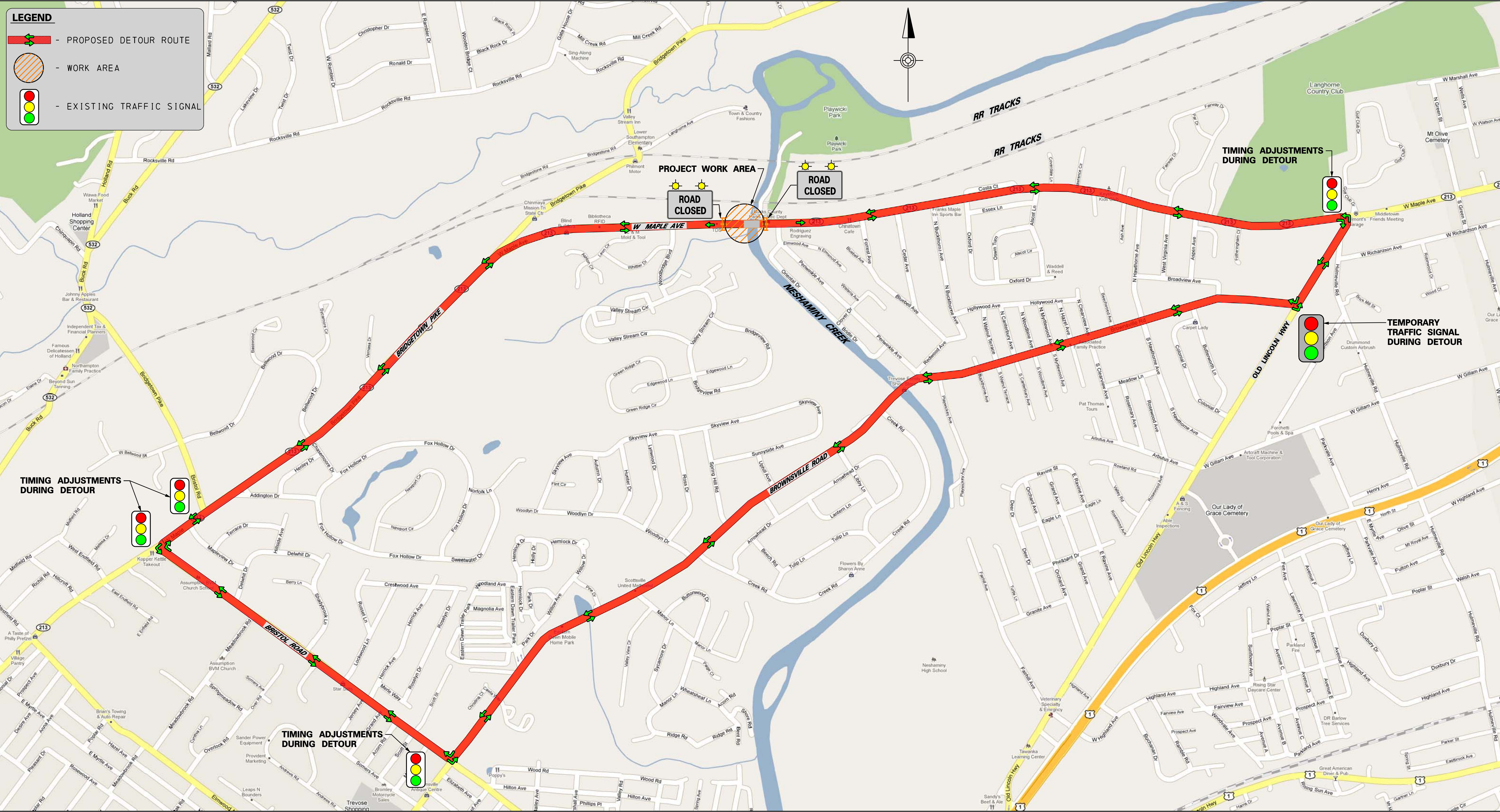


MICHAEL BAKER JR., INC  
201 GIBLARTAR ROAD, SUITE 120  
HORSHAM, PA 19044



**LEGEND**

- PROPOSED DETOUR ROUTE
- WORK AREA
- EXISTING TRAFFIC SIGNAL



**WEST MAPLE AVE OVER NESHAMINY CREEK**  
 BUCKS COUNTY, PENNSYLVANIA  
**VEHICULAR DETOUR PLAN**

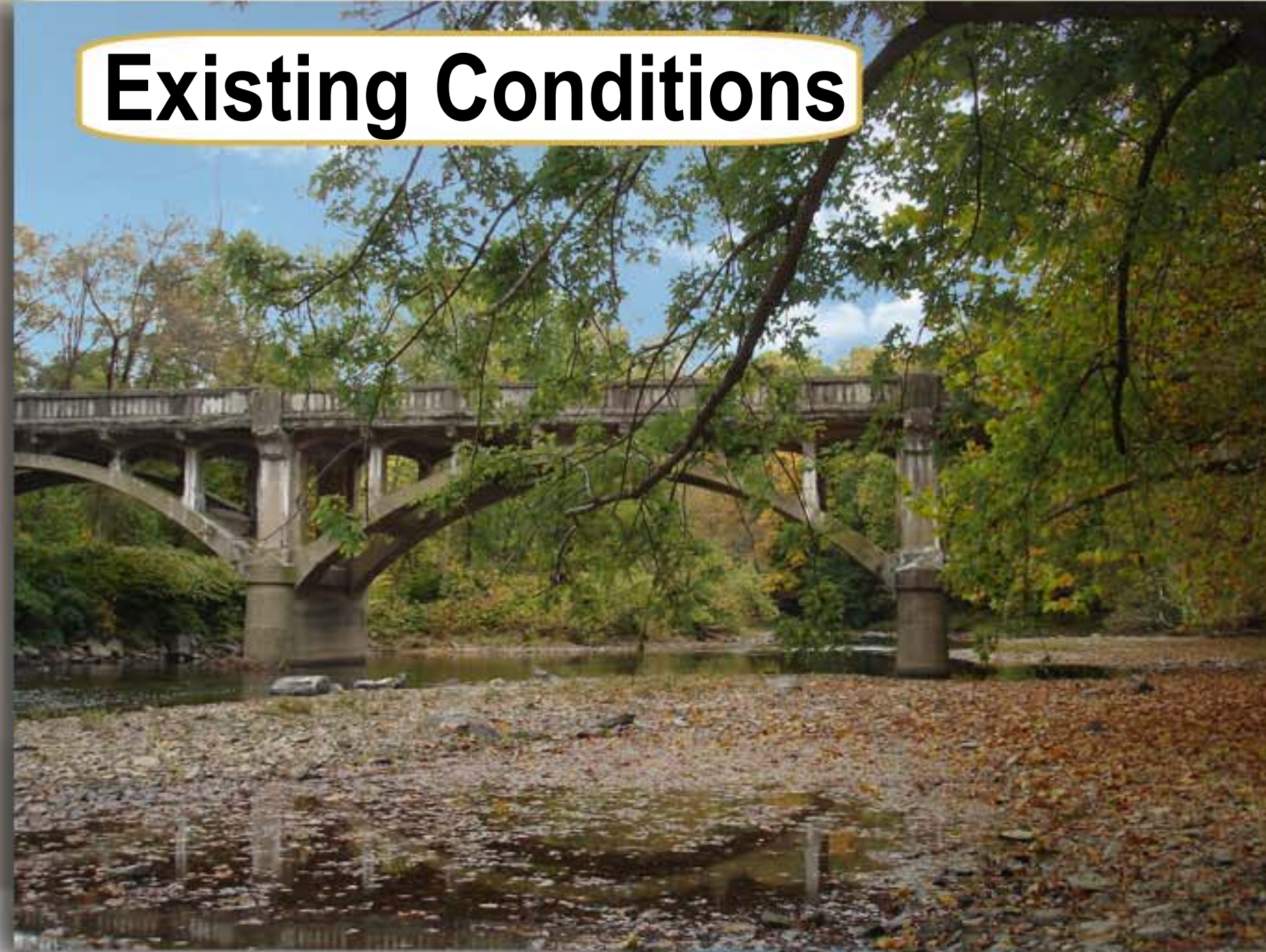
E:\1521\WMA\Plot\Maple\_Aerial\_detourplot.dgn

© 2010 Google Map Data © 2010 Google

# WEST MAPLE AVE BRIDGE RECONSTRUCTION

LOWER SOUTHAMPTON TWP &  
MIDDLETOWN TWP  
BUCKS COUNTY, PA

**Existing Conditions**



**PROPOSED CONDITIONS**